



Wyatt Detention Facility

Pride, Performance, Professionalism

2
0
0
9

ANNUAL REPORT



.....
PRIDE
PERFORMANCE
PROFESSIONALISM





TABLE OF CONTENTS

OUR MISSION	4
OUR VISION.....	4
CFDFC BOARD OF DIRECTORS	5
A MESSAGE FROM THE CEO	7
2009: THE YEAR IN HIGHLIGHTS	9
2009: ECONOMIC BENEFIT REPORT SUMMARY	13
DETAINEE STATISTICS.....	14
FINANCIAL STATEMENTS	17



OUR MISSION

The primary mission of the Donald W. Wyatt Detention Facility is to protect the public from people who pose a threat to society. Our mission is accomplished by operating a safe, secure, and humane facility that is in compliance with state and federal law, as well as the American Correctional Association standards. Our employees are highly trained professionals and will uphold ethically sound behavior at all times. *Motto: Pride, Performance, Professionalism*

OUR VISION

The Donald W. Wyatt Detention facility has a history of exemplary practices and operational excellence. It is recognized nationally as one of the most, if not the best, secure adult detention centers in the country and is routinely afforded the highest performance scores from federal, state and county operational audits.



.....

CFDFC BOARD OF DIRECTORS

Chairperson
Daniel Cooney

Vice-Chair
Bruce Corrigan

Treasurer
Eugene Racquier

Member
Michael Golenia

Member
Kevin England

Chief Executive Officer
Anthony Ventetuolo, Jr
AVCorr Management (Jan-Apr)



Warden
Wayne T. Salisbury, Jr.

Chief Financial Officer
Tammy Novo

Legal Counsel
Margaret Lynch-Gadaleta, Esq





MESSAGE FROM THE CHAIR

WE BELIEVE, AND IT'S WELL KNOWN, THAT THE DONALD W. WYATT DETENTION FACILITY IS A WORLD-CLASS CORRECTIONAL FACILITY.

• A MESSAGE FROM THE INTERIM CEO
•
•

As the Interim Chief Executive Officer, I have spent my short tenure here (21days) focused on improving our grim financial situation and improving the management, safety, and security of the facility. I have had numerous interactions with the Board of Directors to begin the process of setting the direction and priorities for the organization. I am committed to fulfilling my fiduciary responsibilities to the Bondholders and the Board of Directors and to working closely with the United States Marshal Service and the citizens of Central Falls. I am dedicated to seeing that this organization moves in the right direction through the next year.

This year has proved to be more of a challenge than 2008; however there are only plans to move forward, without looking back. The Board Members have worked diligently to set



the stage for a more positive future and staff remain focused on performing their duties with the utmost Pride, Performance, and Professionalism. The Organization is working meticulously to shine positive light on the facility, although this feat did not come without its own tribulations. The Donald W. Wyatt Detention Facility remains consistent with the ability to operate a safe, secure, and humane facility despite the current struggles the organization faces.

Undeterred by all of this, we continue to meet the challenges head on, with a renewed dedication to our core values and our mission. The Central Falls Detention Facility Corporation and the Donald W. Wyatt Detention Facility have the potential to be stronger than ever and committed to excellent performance, best practices and community partnership. We know that we can be a world-class correctional facility.

It is now my privilege to present the Donald W. Wyatt Detention Facility 2009 Annual Report for your review—and it is my hope that the force of our progress continues to shine for the betterment of the community that we share.

Sincerely,

Michael V. Fair
Interim CEO



DONALD W. WYATT DETENTION FACILITY
THE FIRST AND ONLY ACCREDITED ADULT CORRECTIONAL FACILITY IN RHODE ISLAND.



- AS THE UNITED STATES FACES FORMIDABLE CHALLENGES ON BOTH THE
- IMMIGRATION AND HOMELAND SECURITY FRONTS, THE ROLE OF THE WYATT
- BECOMES EVEN MORE CRUCIAL TO OUR NATION.

2009: THE YEAR IN HIGHLIGHTS

JANUARY 2009

- ▶ Due to the negative impact from the death of the ICE detainee in 2008, 3 out of 5 CFDFC board members resign necessitating the Mayor to appoint a new board panel.
- ▶ Interim legal counsel appointed by the new board, Margaret Lynch-Gadaleta appointed as interim legal counsel.
- ▶ The Board requests copies of all vendor and consulting firm contracts as well as any audit reports for 2008.

FEBRUARY 2009

- ▶ Board voted unanimously to terminate Ruggiero, Orton & Brochu as legal counsel to the board and permanently appoint Margaret Lynch-Gadaleta as legal counsel.
- ▶ Board suspends any further activity with RDW Group until a complete review can be conducted.
- ▶ Board requests new legal counsel to conduct a comprehensive legal review of the corporation.
- ▶ Wyatt employees address the board regarding the decline of morale due to recent comments made by the board Chairman and the Mayor.
- ▶ The Office of the Federal Detention Trustees conducted an inspection tour and the Wyatt receives accolades for its operational standards with only minor issues noted.

MARCH 2009

APRIL 2009

- ▶ Board votes to terminate contract between the Corporation and Consulting Agreement with Anthony Venteluolo, Jr.
- ▶ Board approves to allow Warden Salisbury to continue to run the operations of the facility and any administrative duties as he has historically.
- ▶ Board approves to allow Tammy Novo, CFO to continue to financially run the facility in regards to day to day operations and administrative duties as she has historically.
- ▶ CFDF Police Chief Colonel Joseph Moran appointed to act as the Interim Chief Operating Officer.



MAY 2009

JUNE 2009

- ▶ Michael Fair from MVF Consulting appointed as consultant to conduct a managerial/operational review of the facility on the request of the Bondholders.
- ▶ RISP canine units and CERT conduct sweeps of the grounds and the housing units.

JULY 2009

AUGUST 2009

SEPTEMBER 2009

- ▶ The staff participated and ran a 3 month food drive to benefit the RI Food Bank and aided in the public need with a donation of 758 total pounds of food and a total of \$253.

OCTOBER 2009

- ▶ The Warden hosted the annual Family Halloween party and extended the invitation to the families of the CFPD and CFFD.

NOVEMBER 2009

- ▶ RISP canine units and CERT conduct sweeps of the housing units.

DECEMBER 2009

- ▶ Due to rising concern of the management of the facility and the lack of communication between facility management and the Board of Directors, both the Warden and Chief Financial Officer were suspended with pay.
- ▶ Michael V. Fair was appointed as Interim Chief Executive Officer to oversee and run the organization at the direction of the Board.
- ▶ Board approved the change of signatories from Wayne Salisbury and Tammy Novo to Nancy Williams, Accounting Manager, Acting Warden Timothy Tapley, COL Joseph Moran, and Michael Fair, CEO.
- ▶ Board approved to change 401K Trustees from Wayne Salisbury and Tammy Novo to Acting Warden Timothy Tapley, COL Joseph Moran, and Lori-Ann Pouliot, Acting Human Resources Manager.
- ▶ Staff was invited to participate and contributed to the First Annual Holiday Express event for the families of Central Falls.



The Wyatt Detention Facility has a history of exemplary practices and operational excellence. It is recognized nationally as one of the most, if not the best, secure adult detention centers in the country and is routinely afforded the highest performance scores from federal, state and county operational audits.





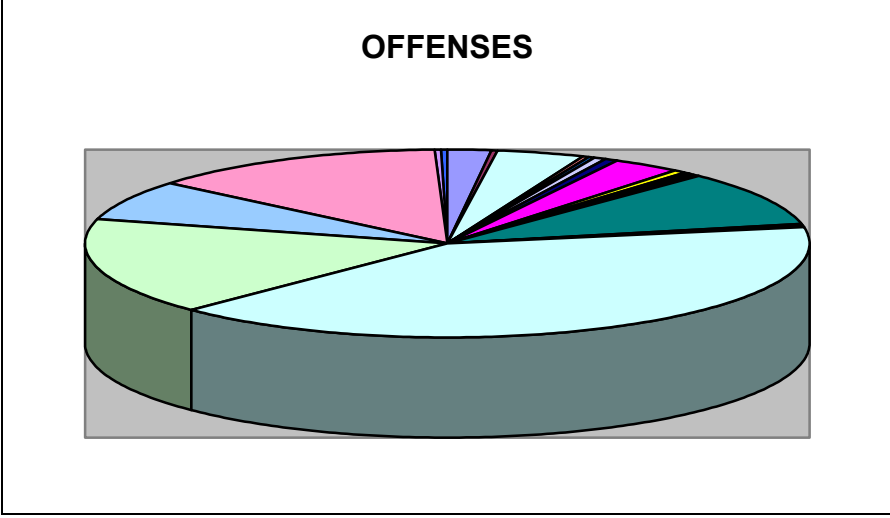
• THE CORPORATION CONTINUES TO CONTRIBUTE TO LOCAL AND AREA VENDORS
• ALTHOUGH OUR OVERALL FINANCIAL SITUATION MAY BE GRIM. UNFORTUNATLY THE
• 2009 IMPACT FEES TO THE CITY OF CENTRAL FALLS COULD NOT BE MADE IN GOOD
• FAITH DUE TO THE CORPORATION'S CURRENT SITUATION.

2009: ECONOMIC BENEFIT REPORT SUMMARY

Impact fees paid to Central Falls (2009)	\$	0.00
In-kind Contributions to Central Falls	\$	98,600.00
All Vendor contracts	\$	6,328,240.00
Rhode Island/Area Vendor Contracts (2008)	\$	34,797,826.00
Community Contributions	\$	100.00
TOTAL		\$41,224,766.00

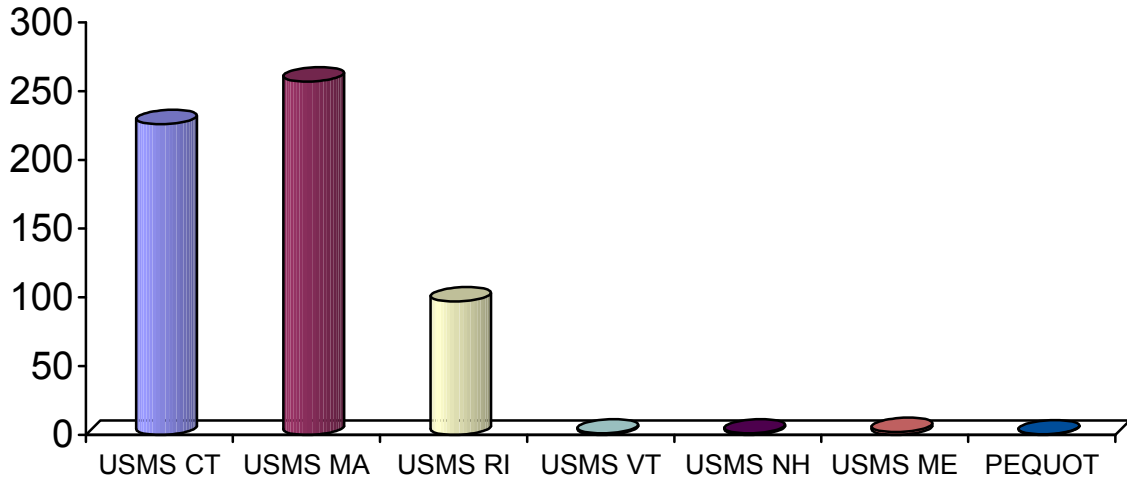
It is the legislative mandate of the Central Falls Detention Facility to provide economic benefits to the City of Central Falls and the State of Rhode Island. This summary may be a bleak demonstration of the current financial role that the Wyatt Detention Facility has played in the local and state economy during 2009, however with a new focus and much needed change, Wyatt plans to continue to lay the financial growth for the local and state economy in the year to come.

• DETAINEE STATISTICS
•

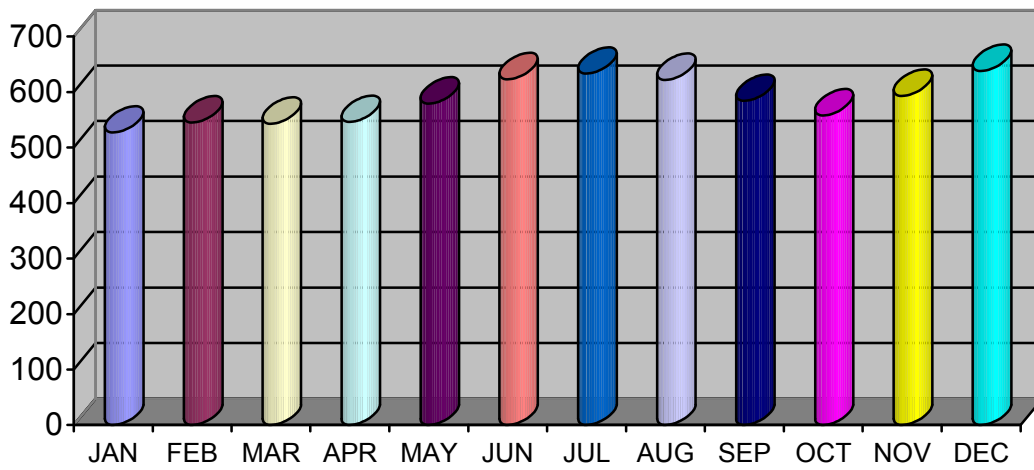


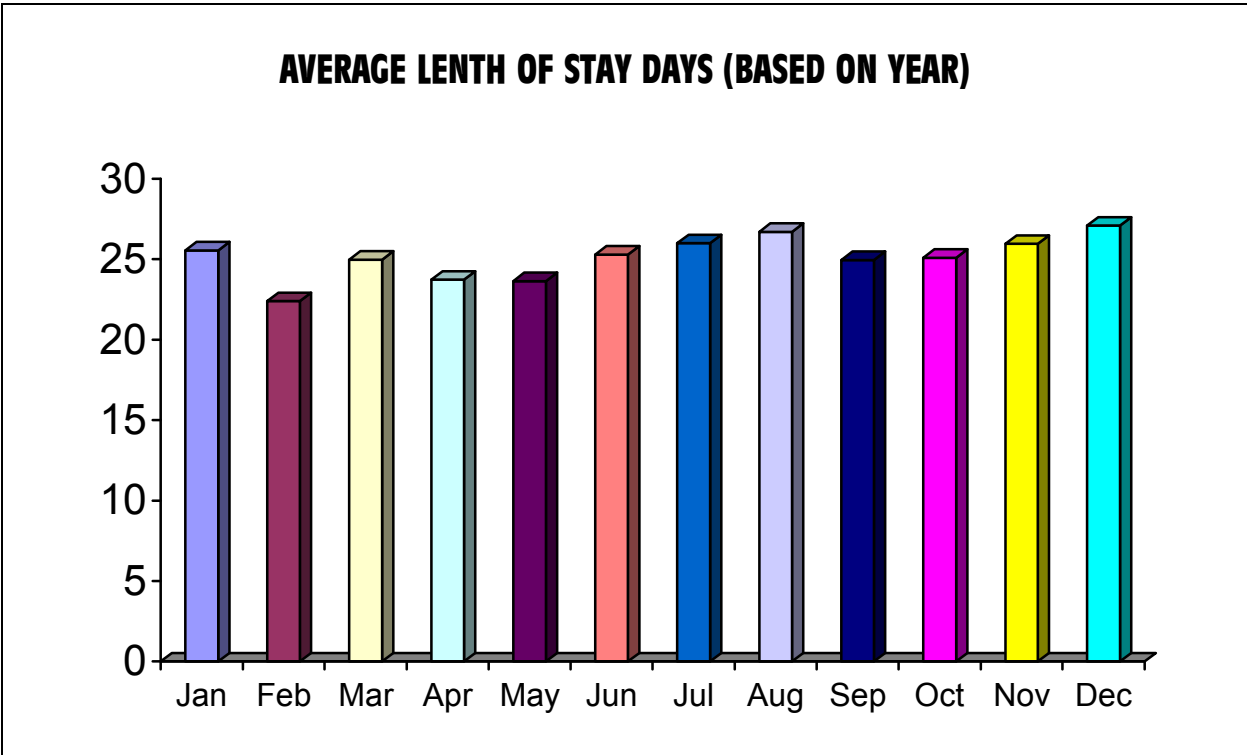
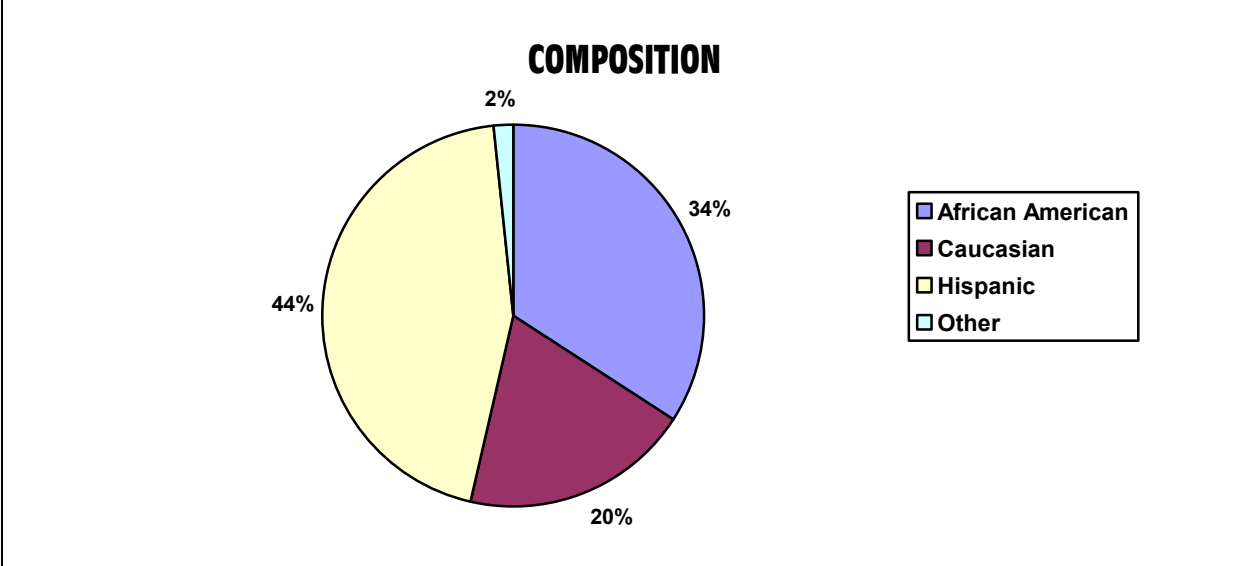
CHARGE	PERCENTAGE OF POPULATION
Child Pornography	2.68%
Writ	.18%
Rape	.18%
Immigration	5.00%
Homicide/Murder	.18%
Homicide – 1 st Degree	.18%
Kidnap	.54%
Sexual Assault - Abuse	.89%
Sexual Assault/Intent Sex Conduct	.71%
Robbery	4.11%
Assault And Battery	.54%
Arson	.54%
Burglary	.18%
Larceny	.54%
Fraud--Attempted	12.50%
Embezzlement	.54%
Computer Crimes	.18%
Drugs—Distribution For Resale	54.29%
Drugs--Possession W/Intent	22.32%
Gambling	.18%
Parole Violation	9.11%
Weapons Offense	18.04%
Explosives - Possessing	.18%
Selling Weapons	.18%
Civil Rights	.36%

COMMITMENTS BY JURISDICTION



AVERAGE DAILY POPULATION





CENTRAL FALLS DETENTION FACILITY CORPORATION

FINANCIAL STATEMENTS

DECEMBER 31, 2009

